



Contours & Conflation Globalized Science & Religion: Research Study

Author

Dr Rojukurthi Sudhakar Rao

Returning Scholar to self-directed Research in Graph Theory & Applied, India

Email: 1955sudhakar@gmail.com

ABSTRACT

From multiple perspectives, tools of importance like contours and conflation are singled out to take a survey and to conduct this research study assimilating the formidable impact due to the globalised Science & Religion in present times. The analytical keenness required to swim through the troubled waters of chosen Research Study on Science & Religion in order to be able to establish global reality with facts of the controversies in support and against the theme of this Paper is at its best fit to impress upon the hungry minds. The entire Paper from the start to the finish is like a different story untold till now in research-coaching-technique making use of the tools of contours and conflation which both are intra and inter related in application to Science and Religion complicatedness.

Key Words: *Contours, Conflation, Study, Science, Religion, Globalized, Research.*

Academical Introduction

A contour is defined as the outline of a figure or body. It is the edge or line that bounds a shape or an object.

Before entering into the title study, one has to survey a variety of colorful definitions of the Contour to get a long range view of the sense of correlation as a way to the path of the Sciences, Religions and super-natural things.

In Electronics, Contourograph is provided for as a device using a cathode ray oscilloscope to produce imagery that has a three dimensional appearance.

In Meteorology, it denotes the height-change line.

In Administration having a complex structure or an order of arrangement of features in Management, it is defined as a major contour of 'so and so' Administration or 'so and so' Management.

In Agriculture, Contour is a system of plowing, sowing and cultivating along the contour lines of the land in order to trap water runoff and prevent soil erosion.

We come across contour line in Geography or a contour map. A line on a map or chart joining

points of equal height or depth becomes a contour. Also, contour interval represents the change in height or the rise between two contour lines falling next to each other.

In essence, a contour gives us a complete sense of line making or marking the external shape of anything and thus emerged the basic idea of active contour models to evolve a curve subject to constraints from a given image in order to achieve an optimal state to outline an object or a phenomenon.

Latest, in Computer Science, researchers are making the Contour model for describing the run-time execution of programs written in block-structured languages made up of a program component, a data component and the control component.

Science & Religion in Natural World

The most curious aspect of the scientific world we live in, says science writer Loren Eisely, is that it exists at all. Westerners often unconsciously assume a doctrine of Inexorable Progress. Yet, the archaeologist would be forced to tell us that several great civilizations have arisen and

vanished without the benefit of a scientific philosophy. The type of thinking today known as scientific with its emphasis upon Experiments and Mathematical Formulations arose in Western Europe. Science is not natural to mankind at all. Inquisitiveness about the world is indeed a natural attitude but institutionalized science is more than that. It has rules which have to be learnt and practices built upon with techniques which have to be transmitted from generation to generation by the formal process of academic coaching and tutitions in Education. In short, it is an invented Western European scientific institution with proliferation property to everywhere on the Planet of Earth as well as not being one that may be counted upon to arise from human instinct. Just as we can understand, control, and manipulate nature because of the ordered cosmos, there is an ordered human nature, which means we can control ourselves.



fig.1. Loren Eisely, Science Writer

Human inclination to acquire skills with mobilization of and distancing from features of Creation's Universe and Natural World of non-human living beings take unnecessary risks due to human's vulnerability before powerful natural forces which are the powers greater than the understanding of people and simply put—"out of reach of the senses" of observers and experimentalists. Many elements in Nature provoke this response with little provocation for instance, the Snakes.

So, the natural world carries intrinsic values that human beings should recognize. These values exist not only at the level of individual organisms but also in species, ecosystems, and natural processes. The existence of such values means that humans have duties toward the natural world of species including themselves. Let it be recalled what has been said about the Natural World by the great Philosopher, Holmes Rolston, in the year of 1986, that Nature (interchangeably applied to the frequenting usage of terms such as Creation, Universe, Planets, World, Globe, Cosmos & Space-time) is a philosophical resource as well as a scientific, economic, recreational and aesthetic one. There is an incremental optimism about the human capacity to be good with ability and responsibility to improve itself and thus new focus on the natural world brought on by the autonomization of nature.



>> **fig. 2.** Prof. Rolston on being Human

We (human beings) are programmed to ask why and the natural dialectic is the cradle of our spirituality. The Bye-laws are the Natural Science, Physical Science, Social Studies, History and Composite Mathematics without which aloneness constitutes a heavy burden for humans came to be largely known as the only social species in the Creation. That's why, as unique social species, we have a safe and secure generalization for ourselves that our boyhood is meant for Education, our middle age meant for materialism and lastly, our old age is meant for our spirituality coverage as finishing touches to the span of being human.

Conflation? What does it mean for Science & Religion?

Conflation occurs when the identities of two concepts such as Science and Religion share some characteristics of one another to seem to be a single identity. It is to imply that the differences simply appear to become lost. In logic, it is the practice of treating two distinct concepts as if they were one. However, if the distinctions between the two concepts appear to be superficial, intentional conflation may be desirable for the sake of conciseness and recall. Conflation should not be confused with inquiry because Science and Religion belong to and define the same World we live in. The scientific method is a systematic process of question, hypothesis, testing, data analysis, conclusion and repetition. Elements of this process could apply to historical testing but a historic event cannot be confirmed via scientific experiment nor is a historical event repeatable i.e., there exists no solution to revert to time to test it. Religions have also gathered evidence of just a different kind--taking the form of texts, personal evidence, claims of miracles, 'God Field', Creation, Nature, Space-Universe and others.

Faith as Conflation in Science & Religion

This research believes that it is better managed to be understood by those scholars provided they are up to a Paper writing standard and intent on their own within the strengths and weaknesses of integration and differentiation of the two formidable knowledge-field-forces, namely, Sciences and Religions. It is effortless to tackle the assembled parts for a new product by a researching Scholar in the know of the connectivity arising out of one's forbearance for having to do with the inescapable triad of the Mind, Science and Religion in one's own passed, passing and going to pass time-limited frameworks constituting the commencement-stage of life, occupation-stage in life and completion-stage of life, i.e., the agenda of human- life. During the course of life, certain amount of time, say the first 10 years of the birth and the last 10 years before death, i.e., $10+10=20$ years of time shall have

passed away without botheration of Sciences and Religions as one's Mind ceases to operate and react to cope up with the surrounding knowledge-field-forces. This is one kind of permanent relaxation and general concession naturally made available in being human, no matter whichever be the place and climatic zone of birth and sense of belonging to branded practice of a particular Science and Religion or their combo by a human being during the dynamic course of twists and turns in active years of life's proceedings in one's own span presided over by oneself with or without aides. Again and again one notices that each interpretation of the religious evidence throughout history that has spurned the manufacture of so many different sets of beliefs is a unique faith while each interpretation of the Creation scientifically of late being an infinite number of Universes -- one for each possible state as Many-Worlds is also a unique faith. Therefore, let us glance over the pictures hereunder in the next section for it is proof-worthy that Conflation occurs when the identities of two concepts such as Science & Religion share common characteristic, the faith, to be their idea a -la-mode most single unique identity.

Global Operator Snake: Conflation Identity

Human inclination to acquire skills with mobilization of and distancing from features of Creation's Universe and Natural World of non-human living beings take unnecessary risks due to human's vulnerability before powerful natural forces which are the powers greater than the understanding of people and simply put—"out of reach of the senses" of observers and experimentalists. Many elements in Nature provoke this response with little provocation including, for instance of this Research Project Paper, the Snakes, which at their best operate both as religious operators as well as scientific operators laying down the requisite contours in our real life world of operations' study and research divided into the two worlds of Religion and Science throughout the daily constant and variable routines and time-tables having to

conduct ourselves without fear and favour as if we were all taking birth on such an oath administered to every one of us before we are delivered into this natural world for the entire duration of course of our lives and thereafter. So, snakes known and made for the status of the conflation identity should be called the global operators or common

operators considered for potential secrecy and explosive secret in natural world serving the causes and interests of human world in the roles of religious operators & scientific operators while at the same time being non-human in appearance. Hence the title of the Paper, in a nutshell, "A Contour Study".

Global-Operator-Snake @ Religious Identity: Hows & Whys?



Fig.3. Talking Snake in Christianity & Adam with Eve on Apple Food in Eden Garden



Fig.4. Snake Gods -- Hinduism, Buddhism, Jainism-- Vishnu & Siva

Christian fundamentalism survives in its faith of God's created World with human race springing from a woman tempted by a speaking snake evidenced collaterally in many other religions with the snake-value pre-dominantly held, for example, Snake Gods of Hinduism, Buddhism, Jainism, viz..Vishnu & Siva teaching us snake-killing is a big taboo because snake is a symbol holding connection to its origin within itself as depicted severally in these pictures above and

below. Snakes are important in many religions including the Judeo-Christian tradition, Hinduism, Egyptian and Greek mythology, Native American religions and among the red-Indians. Churches that practice snake handling have special services in which people actually handle venomous snakes, supposedly giving evidence that the church members are true believers who are empowered and protected by God.



Fig.5. Mammy Water, a serpent- mermaid- priestess venerated in Africa.

It has also been researched that snakes helped shape the mammalian brain in regard to the amygdala in cerebellum in the limbic system and the vision system. Some have only considered the snake as sacred while others have given them a divine status worthy of worship. In the Judeo-Christian tradition, the most famous reference to the snake in religion is that of the talking serpent or talking Satan in the Garden of Eden as an

instrument to tempt Eve (Woman) to disobey God's instruction to Eve "not to bite any Apple of the Tree" for she should not feel sexy toward Adam (Man). See Figure 3 above and a like reference also surfaced in Hinduism. See Figure below. Snakes feature heavily in myths, legends and folklore. In the Hindi language the snake is known as 'nag', and is worshipped across much of India, and the Indian God Lord Shiva is always pictured with a cobra around his neck. In Chinese culture, the 10th February 2013 marks the start of the Year of the Snake. The snake is the sixth of twelve animals featured in the Chinese Zodiac and it is said that according to ancient Chinese wisdom, a snake in the house is seen as a good omen and a sign that the family will not go hungry. Those born in the year of the snake are said to be wise, calm and responsible.



Fig. 6. Hinduism--Sexual desire is milk Snake or a *triangulum* whereas traditionally , milk is served on the first night of marriage by Hindu brides to bridegrooms to create mutual sexual desire inviting female gender and to bear the brunt of female gender for Snakes represent health , life and good fortune. King of serpents, God Siva with wife Parvati seen.

Hindu Religion, for example, survives on Siva who is called the 'King of Serpents'. The legend of Snakes is found in both Hinduism and Buddhism which refer to heavenly snakes also often with numerous heads besides human sacrifices were made to the rattlesnakes. The ancient Egyptians and Greeks also had many representations of snakes in their religious manifestations.

Wisdom is another attribute given to snakes. The Bible makes reference to snakes being wise as do other religions. In Hinduism, the god Siva represents wisdom and is associated with serpents. The Greeks associated serpents with wisdom as evidenced by Apollo and Athena, both considered very wise, being associated with serpents. The Hindu God & Goddess, Vishnu & Laxmi who are husband and wife rest on the big Serpent called Seshasayee as seen below.



Fig. 7. The Hindu God, Vishnu with wife Laxmi rests on Snake.

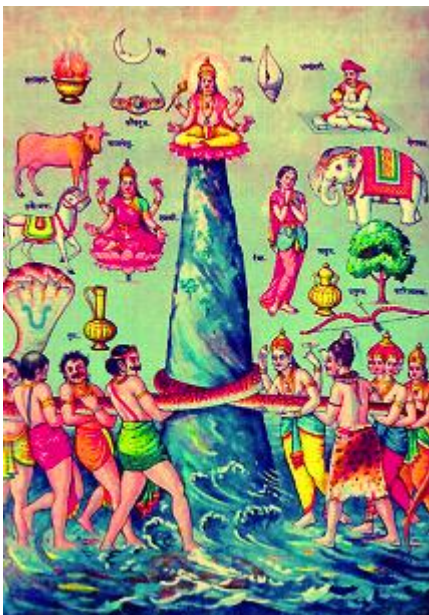


Fig.8. Adishesu, the responsible Snake Divine carries the Earth on its hoods rolling (top) & oblized to churning the Milky Ocean by Gods & Non-Gods holding its head and tail

Zoological data and mythologies contributed to ancient Western knowledge about large serpents and maximum sizes of ancient pythons. In the early Middle Ages, the ancient information was all on sea serpents and Pythons. The expedition of Alexander the Great into India (327-325 B.C.) and the Bagradas River incident in North Africa (256 B.C.) had enormous repercussions on the development of serpent lore which is the credible evidence. Also, the presence of ancient populations of pythons living along the North African coast west of Egypt and the Arabian Sea between the Indus River and the Strait of Hormuz was factual. This constitutes ancient scientific basis of the great serpent from historical evidence.

Global-Operator-Snake @ Scientific Identity: Hows & Whys?

Snakes are specialised limbless reptiles ranging in size from around ten centimeters to over ten meters of body length with ability to move over land, climb, swim or burrow with ease. The creation of the active snakes is a wandering or moving geometry for scientists. One is reminded of a geometry of length, perimeter, area, shape, angle, arcs of direction, arcs with left and right sides, borders, distance, angular information, boundaries and shape-similarity of lines when snakes are attracted to edges and large image gradients. There are many advances in computer

science and education applications. The concept of snake was first introduced in 1988 and has later been developed by different researchers. A snake is an energy-minimizing spline guided by external constraint forces and influenced by image forces that pull it toward feature such as lines and edges. Snake are active contour models: they lock onto nearby edges, localizing them accurately. Scale-space continuation can be used to enlarge the capture region surrounding a feature. Snakes provide a unified account of a number of visual problems, including detection of edges, lines, and subjective contours; motion tracking; and stereo matching. Active contours or snakes are computer-generated curves that move within images to find object boundaries. They are often used in computer vision and image analysis to detect and locate objects, and to describe their shape. For example, a snake might be used edge detection, corner detection, motion tracking, and stereo matching; one might be used to find the outline of an organ in a medical image; or one might be used to automatically identify characters on a postal letter. The Physics behind Snakes phrased in a more technical way says that snakes are energy minimizing splines that simulate the behavior of closed springs rolling downhill on a hilly terrain This leads us directly to the understanding of snakes' continuousness property .

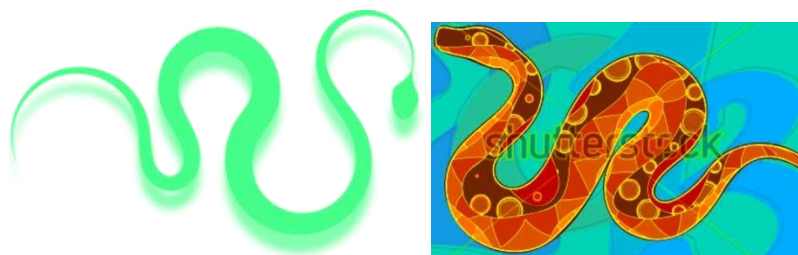


Fig.9. Snakes limblessness

Contour Science of Snakes

Scientists defined a snake as an energy-minimizing spline guided by external constraints and influenced by image forces that pull it toward features such as edges and lines. They lock onto nearby edges to localizing themselves

accurately. Snakes cannot move toward objects that are too far away and that snakes cannot move into boundary concavities or indentations. In other words, Snakes are contours that can move under the influence of internal energy and external image forces attracting snakes with their positions changing frequently and corrected by themselves

such as from stretching or contracting along length creating curvatures curtailing snake-bending too much .They form snake-based contours thus and interesting to watch by keen observers who can notice several crawling ‘point to point’ and linear – ‘length to length’ features . Snakes are not curl-free.

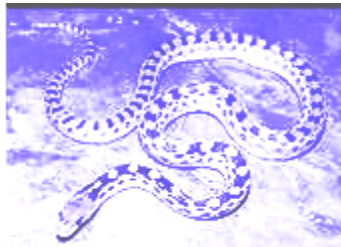


fig. 10. Not curl –free Snake

Active Contours (SNAKES)

- We're not looking for a contour of a shape.
- Just a good contour.

Because of the way the contour slither while minimizing their energy, they are called snakes. The model is active. It is always minimizing its energy functional and therefore exhibits dynamic behavior. Snakes exhibit hysteresis when exposed to moving stimuli.

Fig.11. Snake Contours



Fig 12. Garter Snake contouring his body on a brick platform

Snaky Contour lines & Topographic Maps

Contour lines are lines drawn on a map connecting points of equal elevation. Contour lines are useful because they allow us to show the shape of the land surface (topography) on a map. Contour lines are the greatest distinguishing feature of a topographic map. On seeing a topographic-map-contour-lines closely, one feels as if these are traces of a swiftly passing snake movements connecting distances in a given land region or on the top of Hills and Mountain.

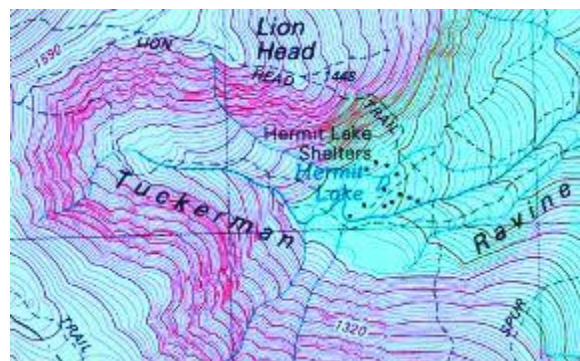


Fig.13 Topographic-map-contour-lines

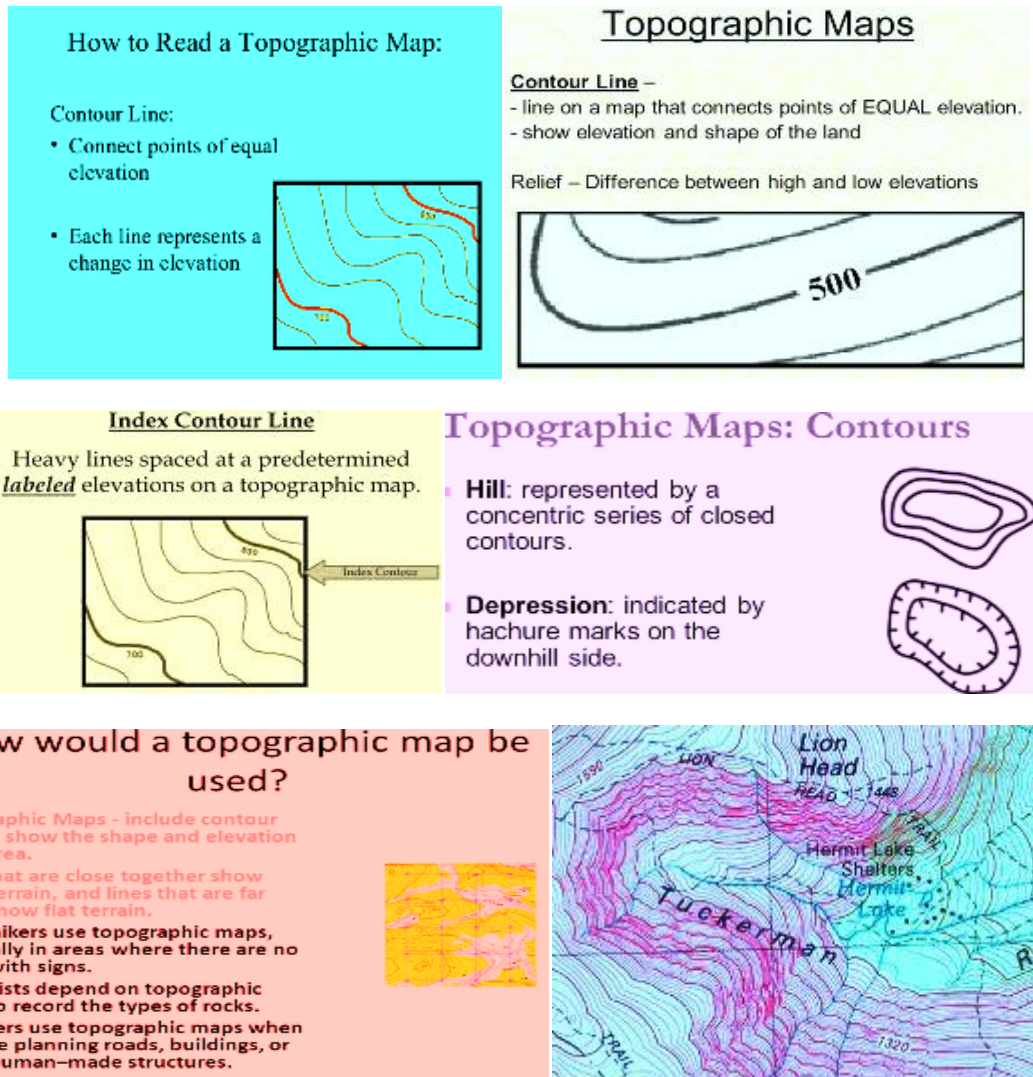


Fig.14.Pictorial sets on Countours & Maps for Land & Hills

Snaky Hill-top-edge-contour-lines @ Religious Conflation

Hills are mentioned more than 500 times in the Christian Bible. While they have a significant symbolic value, hills first and foremost were parts of the physical landscape of biblical times. Mountains/ hills have a logical religious symbolism for biblical cultures since they are closer to God who was believed to dwell in the sky and the heavens. As a result, the God often reveals Himself on the mountaintop / hilltop and we hear people today talk about their own mountain top experiences in their spiritual journeys. Mountains are mentioned frequently in the Bible because mountains dotted the landscape of biblical regions. In the Old Testament, the mountains of Sinai and Zion are most significant.

Mount Sinai, of course, is associated with Moses and is the place where Moses received the gift of the Law, the Ten Commandments. Thus, Mount Sinai is a symbol of God’s Covenant with Israel. Zion, to the south, is the location of the Jerusalem Temple. In the New Testament (Mark and Luke to be precise), Jesus appoints the Twelve on a mountain. In Matthew’s Gospel, Jesus delivers the Beatitudes in his Sermon on the Mount, conjuring an image of Moses who received the Commandments on Mount Sinai. Matthew’s mostly-Jewish audience would immediately pick up on the comparison between Moses and Jesus. Matthew, in particular, has 6 significant mountain scenes in his gospel: Jesus’ temptation (4:8); the Sermon on the Mount (5:1); a number of healings (15:29); the Transfiguration (17:1); Jesus’ final discourse (24:1); and the commissioning of the

Apostles (28:16). Perhaps the most significant mountain scene in the Gospels, however, is the

Transfiguration of Jesus.



Fig.15.Hills /Mountains as the global Religious signifiers & human resting feelings of thought in their peaks and troughs



Fig.16.Hill/Mountain top edge shapes' human-form-resemblance perception

Jesus is accompanied by Moses and Elijah, who themselves encountered God on the mountaintop in the Old Testament. Now, they encounter God through Jesus and Jesus, in turn, is seen as the fulfillment of the Law (Moses) and the Prophets (Elijah).

In Hinduism too, evidence is plenty as regards to hill-top reincarnation of the Vedic Chief, namely,

Lord & Sri Maha Vishnu Bhagwan Saheb who descended from his divine abode of Vaikunta Lok to the planet Earth making his new shift-accommodation on the Tirumala Hills in the State of Andhra Pradesh at Tirupati Town accompanied by his personal attendant team on the seven Tirumala Hills in a row during the course of currently running Kali Yuga.



Fig. 17. Vedic Chief Executive God-Lord Sri Maha Vishnu Bhagwan Saheb (left) descended as Tirupati Balaji (right).



Fig.18. Lord Tirupati Balaji with his wives, Padmavati & Lotus Laxmi (middle).

The picture is given below for the resemblance of the resting deity as the Snaky Hill-top-edge-contour-lines @ Religious Conflation .Two pairs of vertical and horizontal pictures are furnished as

the looking deity and resting deity respectively for Scholars & Readers still unaware of the mundane belief that has turned the Tirupati Temple as the richest Temple in the entire World.

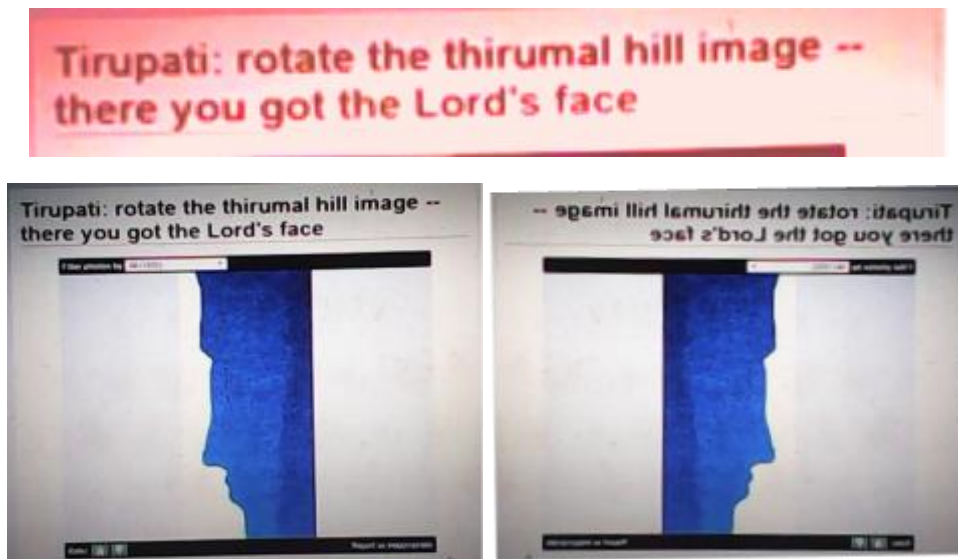


Fig 19. Tirumala Hill of Lord Balaji showing the facial contour of God reincarnated –Vertical show



Fig. 20. Tirumala Hill of Lord Balaji showing the facial contour of God reincarnated --Horizontal show

The figures—19 & 20 above are of the Tirumala God, Lord Balaji with the flash back revelation as follows .

“Om Sri Venkateswara Garu in rocky imprisonment for 37 Centuries rigorously for debt repayment till nill outstanding incurred for own marriage with the Goddess Padmavati Garu as the second Wife after physical and mental separation from the first Wife, Goddess Lotus Laxmi Garu”. What a noble cause for reincarnation indeed ! Inscrutably human are the ways of God!!

Conclusion

It is now true to finalise at the time of concluding the Research Study on Contours and Conflation that the realization of globalised forces of Religion and Science continues to run across the minds of the serious scholars catalyzing their zeal to give more respect to Science and Religion's efforts to impress our mindsets toward both of them without partiality in our outlook. Why because, God does not arrive like a court-room Advocate to take defense on this side of Science or that side of Religion in real-world situations of our own making. So, giving respect to Science & Religion also means deriving our self-respect from Science & Religion. The current World is a liberal and economical Society chiefly supported by Science with its abilities to make mankind happy in times of want of basic food, water and articles of material importance . It is this Science

potential that is responsible for the widening gap between itself and Religious Knowledge consequent of which today we have scientific purchasing power vested in our hands securely for steering the direction of time-bound lives as 'haves and have- nots'.

References

1. (1957). Science of Reality. Swami Sivananda. Y.V.Forest University, Rishikesh, Himalayas, North India.
2. (1928). The Kabala of Numbers. Sepharial. W.Foulsham & Co. Ltd. Yeovil Road , Bucks , England .
3. (1999). Our Daily Bread . Haddon W. Robinson & Herbert Vander Lug . Printed in USA.
4. (1980). Society and Science. Quarterly Journal of Nehru Centre , Mumbai , Western India .
5. (1993). The Vision . Published by the Anandashram , Kerala State , Southern India .
6. Science Contours - Faculty of Science - University of Alberta, <https://uofa.ualberta.ca/science/about-us/contours>
7. contour mapping | geography | Britannica.com, www.britannica.com/science/contour-mapping
8. Christian Contours: How a Biblical Worldview Shapes...
9. Philosophy Of Science: The Natural Sciences In Christian, voebookce.com/gotzug917044.pdf

10. models on the relationship between science & religion <https://www.ualberta.ca/~dlamoure/nm1.pdf>

11. The mythology about globalization, M Ferguson - Communication Theory and Research, 2005

Biographical sketch:--



Dr Rojukurthi Sudhakar Rao

Four Certificates of Merit for excellence in Examinations awarded as well as the Best Scholar Award from the STUDENTS ENGINEERING HOSTEL besides English Competition Award.

The Author did his Masters in Applied Mathematics under the Faculty of Engineering & Technology being the post-graduate Degree in Applied Science attaining the First Position.

The Author passed his Pre-Ph.D Course with Examination in the field of Graph Theory at the Andhra University, Andhra Pradesh State, in the year of 1981 at the Department of Applied Mathematics. Due to financial difficulties on the domestic front and the non-availability of an independent single room for Research Work & Study at the University Research Scholars Hostel for 3 years at the Andhra University, Waltair, in 1981 pending new rooms construction, the author joined the Dena Bank for pay-scale career as an Officer of Banking Statistics in Junior Management in the same year at Bombay (now Mumbai), Maharashtra State, Western India, which being a Nationalized Bank & Government of India Enterprise in the Banking Sector, relinquishing the research -career-prospects in teaching line jobs, having been awarded the C.S.I.R (Council of Scientific and Industrial Research) Junior Research Fellowship, NEW DELHI, INDIA, in 1981 under the Chairpersonship of late Mrs. Indira Gandhi, ex-Prime Minister of India. The interest in Graph

Theory & Applied Research prevails. To his credit, the Author has so far published 14 Research Papers in International Journals of Science & Technology besides GRAPH THEORY RESEARCH STUDIES & THE 46TH ANNUAL CONFERENCE @ THE INDIAN MATHEMATICAL SOCIETY CERTIFICATE. RESEARCH CONTRIBUTIONS: REGULAR GRAPHS / MATCHINGS IN GRAPHS, INDEPENDENT SETS IN GRAPHS, RESEARCH SEMINARS & FINAL SEMESTER LECTURES ON GRAPH THEORY: CLASS WORK, SEMESTER EXAMINATION & VALUATION & INVIGILATION.

1. MARKET JURISDICTION FOR NATIONALIZED BANKS
2. JOINT PUBLICITY AND PUBLIC SECTOR BANKS
3. BANK LEDGER BALANCING: AN ALGEBRAIC APPROACH
4. MATHEMATICAL ROOTS OF GLOBALIZATION
5. The Nature's Graphs and Underlying Mystifications
6. Mathematical Clique of Spiders : Webs of Trigonometric Appliqué & Social Spiders' Pythagoreanism
7. FROM GEOMETRY-FREE & NUMBER-FREE SHADOWGRAPHY TO PRO-ACTIVE SEMIOSIS
8. Knots Of Ebola : INTELLIGENCE OF COMPOSITE MATHEMATICAL PRODUCT DNA
9. Globalization: A Mathematical Biology & Topology Transformation.
10. A University Model Thesis On Globalization For Globalism
11. Recognition of Mind in Global Systems – A Higher Study.
12. Ne plus ultra : Uniform Global Currency (UGC) & Global Monetarism
13. Roads & Railways' Knowledge to Philosophy, A Next Generation Graph Theory

14. Alphabets, Numbers , Punctuation *profess*
Micro Graph Theory
15. Chemistry, Physics sans Mathematics of
Super Atom : A ‘Self ’ Appraisal of post-
Big Bang Universe
16. Nash Equilibrium’s World of Modern
Sciences *superspy* Domestic Religions .
17. Simulation of Vedic Om : Monte Carlo
Method in Operations Research
18. A Treatise on the ‘ Voice Signal Yahova ’
, Male-Voice Heard by Author !

It is the personal opinion of the Author that the advent of Computers & Internet has boosted the self-directed research potential of individual Researchers globally. It is the need of the hour that certain Reforms are required in the World of Research lacking in global monitoring to avoid repetitions in the Research Fields which help avoidance of wastage in Research .Currently, one Global Website for one Field of Universal Knowledge is not in vogue. Also, manual type of thesis should come to an end. Fundamental Reform would be going to have a Global University to bestow recognition on additions to Universal Knowledge rather than Local appeals to Knowledge through local University systems which do not necessarily constitute Universal Knowledge. On the same lines, Global Research Syllabus could be a radical Reform to qualify for research activities on a global-level-scale evaluation.

Banking Education accomplished in various fields of Knowledge through the Study- Syllabus-Channel certified by the written examination awarding by the Indian Institute of Banking, Mumbai. The fields are listed below.

MANAGEMENT ACCOUNTING
FOREIGN EXCHANGE & ARITHMATICS
RURAL ECONOMY
INDIAN ECONOMIC PROBLEMS
BANKING LAW & PRACTICE
BOOK-KEEPING

ENGLISH FOR BANKING
FINANCE OF FOREIGN TRADE
ELEMENTS OF ECONOMICS
STRUCTURE OF INDIAN ECONOMY
BANKING-DEPARTMENTAL BUSINESS
SUBMISSIONS APPLICATIVE NOTES
A. CASH MGMT - MULTI-SUPERVISORY-
DISTRIBUTION
B. AN MIS ADMINISTRATIVE
REQUIREMENTS
C. A SIMULATION TECHNIQUE TO LIMITS
OF CASH-ON-HAND IN BANKS
D. BUSINESS GROWTH -- COMPETITION
DAY-TO-DAY
E. WORKING CAPITAL FOR TERM
LENDING & PROJECTIONS & MIS
CERTIFICATE OF BANKERS TRAINING
COLLEGE, BOMBAY, AWARDED IN
FIELDS BELOW.
MECHANIZATION & COMPUTERIZATION
PERFORMANCE BUDGETING FOREIGN
EXCHANGE ORIENTATION TRAINING FOR
IDENTIFIED BRANCH MANAGERS.
CORE BANKING SERVICES: CBS BY
FINACLE SOFTWARE
CERT. NATIONAL INST. OF INFORMATION
TECHNOLOG , MUMBAI .
OTHER AWARDS:

1. ALL INDIA MANAGEMENT
ASSOCIATION [AIMA]'s Testimonial
for 12th " Young Managers National
Competition "Research Contribution --
Written & Oral PRESENTATION -The
Excellent Work -- as the Team Leader at
Ahmedabad, Gujarat State, Western India
2. Merit Certificate of The Competition
Success Review, New Delhi, National
Capital, India.
3. Currently, the Author is going through
consultations on a blue-print for his
dream-project to start a fascinating “Senior
Citizens University of India (SCUI)”
exclusively for Senior Citizens.